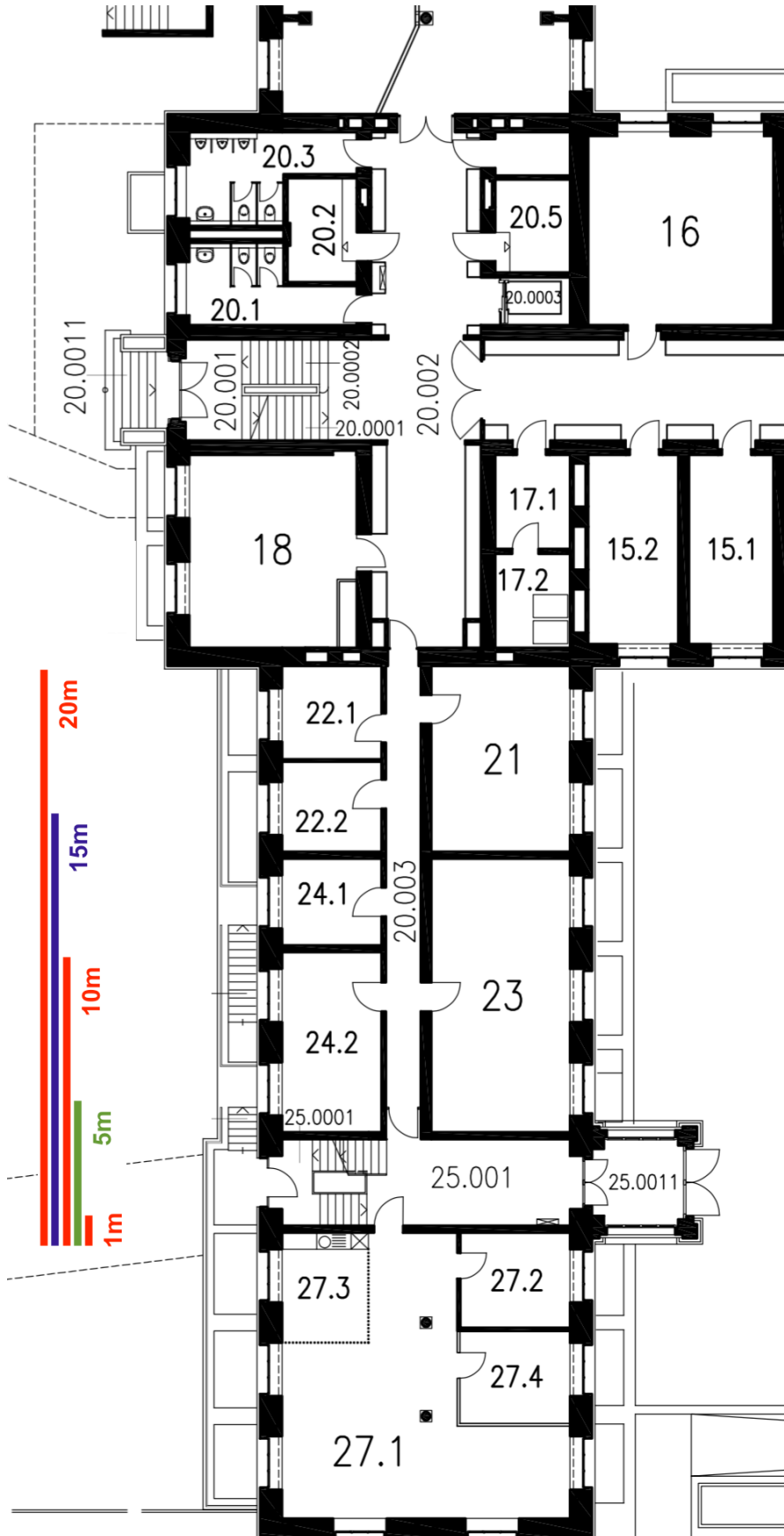
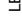






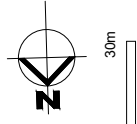


CAB-Gebäude E-Stock „VSETH-Bereich“

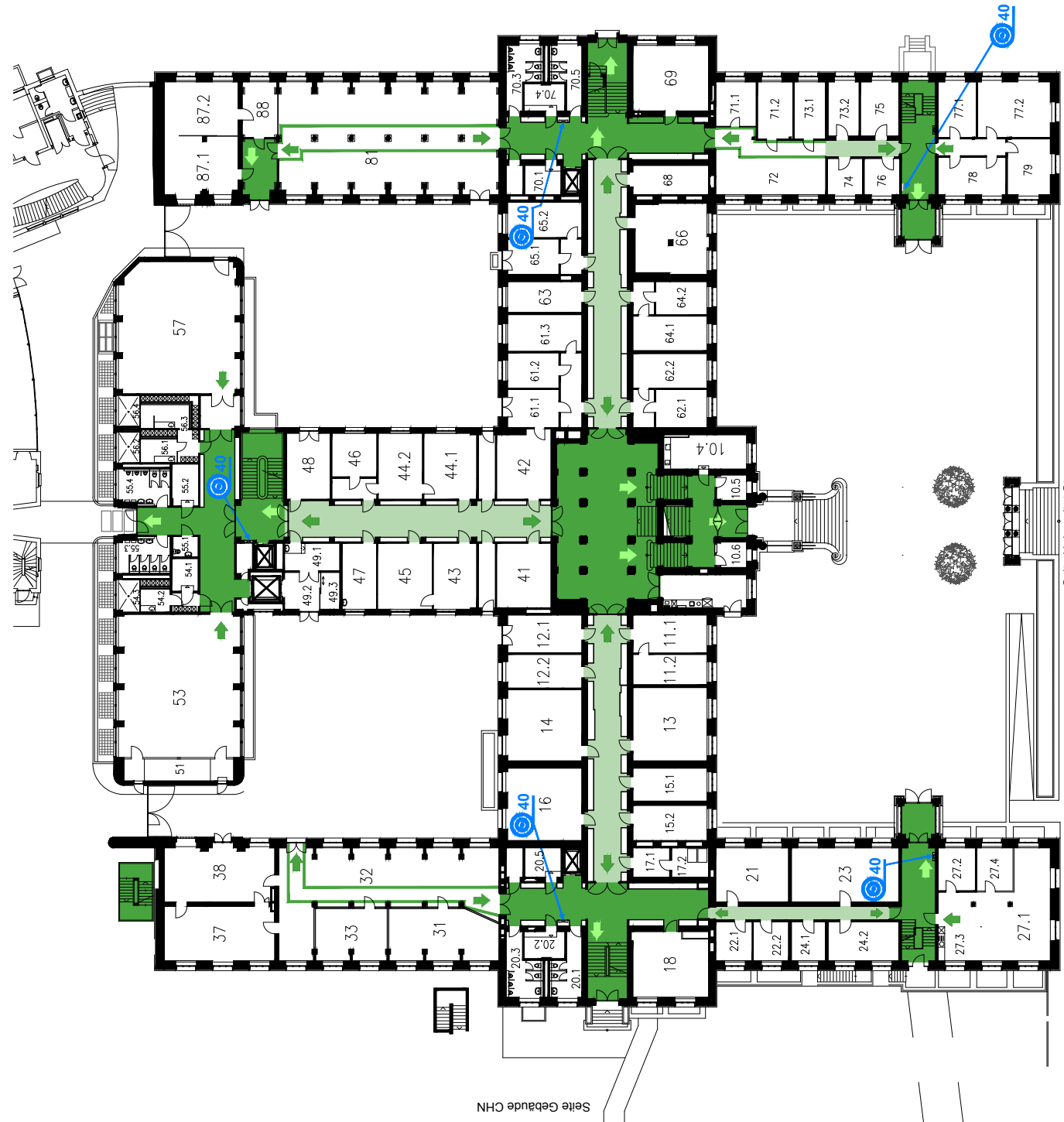


- LEGENDE**
-  Fluchtweg Korridor
 -  Fluchtweg Treppenhaus
 -  Freizuhalten der Fluchtweg
 -  Interne Treppe
 -  Fluchtwegmarkierung selbstleuchtend
 -  Fluchtwegmarkierung nachleuchtend
 -  Wasserdrucksensoren Standort / Schlauchlänge in Meter
 -  40



ETH	Eidgenössische Technische Hochschule Zürich Swiss Federal Institute of Technology Zurich	CAB
EG	E-Geschoss	
Universitätstrasse 6		Fluchtwegplan
ETH Zentrum		
Erstellt: Stab SGU	Datum: 04. September 2014	
Revision: -	Datum: -	

Seite Gebäude NEA



Seite Gebäude CHN

Seite Universität-Strasse